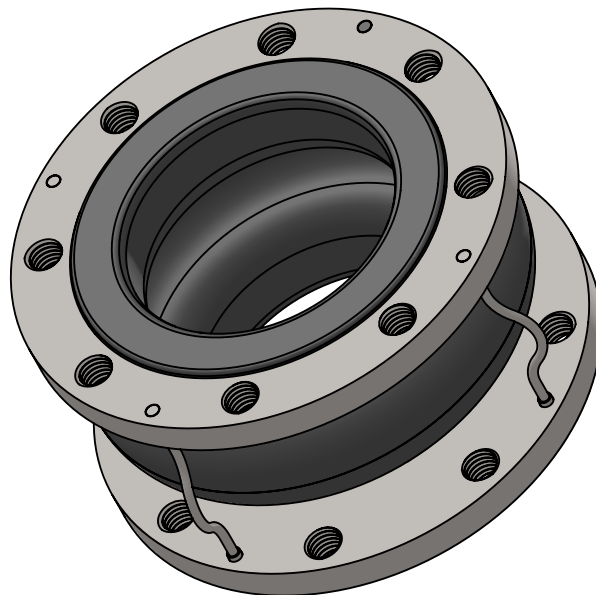
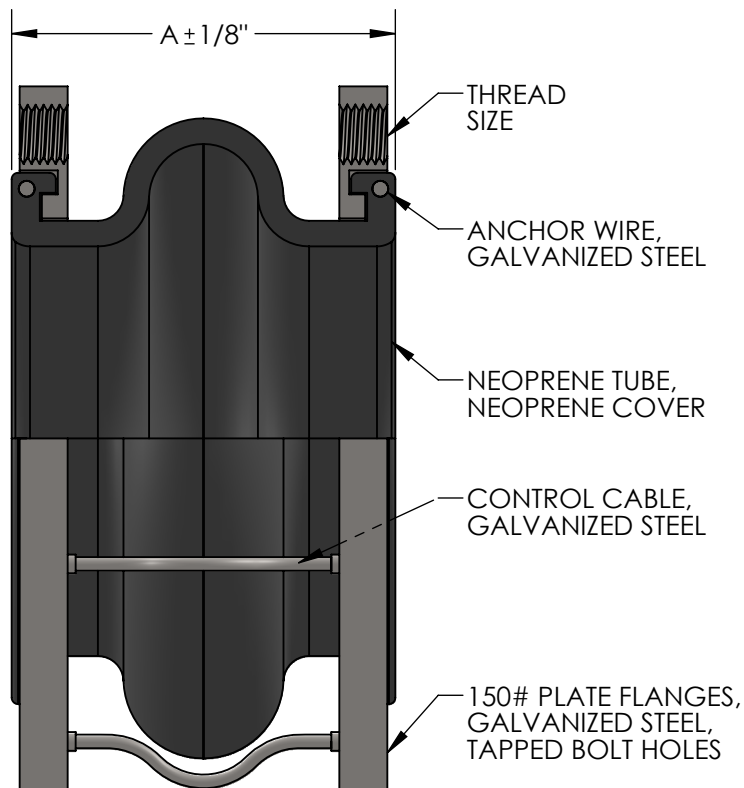


**CABLESPHERE, MODEL MSRCNN**  
**NEOPRENE EXPANSION JOINT, TAPPED BOLT HOLES**



**NOTES:**

WWW.METRAFLEX.COM FOR INSTALLATION INSTRUCTIONS.  
 JOINT MUST BE INSTALLED AT ITS NEUTRAL LENGTH.  
 BOLTS MUST BE PROPERLY TORQUED.  
 NOT SUITABLE FOR STEAM OR VACUUM APPLICATIONS.

**MAXIMUM OPERATING CONDITIONS**

| TEMPERATURE | PRESSURE (PSI) |
|-------------|----------------|
| 170°        | 225            |
| 180°        | 200            |
| 190°        | 175            |
| 200°        | 150            |
| 210°        | 125            |
| 220°        | 100            |
| 230°        | 75             |

MAXIMUM WORKING  
 TEMPERATURE 230°F

| QTY | PART NUMBER | PIPE SIZE |     | A  | AXIAL<br>COMP. | FORCE<br>(LBS) | AXIAL<br>EXT. | FORCE<br>(LBS) | LATERAL<br>OFFSET | FORCE<br>(LBS) | ANGULAR | WEIGHT<br>(LBS) | THREAD<br>SIZE<br>(UNC) | CABLES |
|-----|-------------|-----------|-----|----|----------------|----------------|---------------|----------------|-------------------|----------------|---------|-----------------|-------------------------|--------|
|     |             | INCH      | MM  |    |                |                |               |                |                   |                |         |                 |                         |        |
|     | MSRCNN0200  | 2"        | 50  | 6" | 1/2"           | 55             | 1/8"          | 73             | 1/2"              | 55             | 15°     | 8               | 5/8"                    | 2      |
|     | MSRCNN0250  | 2-1/2"    | 65  | 6" | 1/2"           | 102            | 1/8"          | 68             | 1/2"              | 97             | 15°     | 13              | 5/8"                    | 2      |
|     | MSRCNN0300  | 3"        | 80  | 6" | 1/2"           | 136            | 1/8"          | 115            | 1/2"              | 108            | 15°     | 14              | 5/8"                    | 2      |
|     | MSRCNN0400  | 4"        | 100 | 6" | 5/8"           | 145            | 1/8"          | 242            | 1/2"              | 275            | 15°     | 18              | 5/8"                    | 2      |
|     | MSRCNN0500  | 5"        | 125 | 6" | 5/8"           | 172            | 1/8"          | 196            | 1/2"              | 308            | 15°     | 23              | 3/4"                    | 2      |
|     | MSRCNN0600  | 6"        | 150 | 6" | 5/8"           | 293            | 1/8"          | 563            | 1/2"              | 484            | 15°     | 28              | 3/4"                    | 4      |
|     | MSRCNN0800  | 8"        | 200 | 6" | 5/8"           | 372            | 1/8"          | 587            | 1/2"              | 688            | 15°     | 40              | 3/4"                    | 4      |
|     | MSRCNN1000  | 10"       | 250 | 8" | 3/4"           | 398            | 1/4"          | 455            | 3/4"              | 781            | 15°     | 68              | 7/8"                    | 4      |
|     | MSRCNN1200  | 12"       | 300 | 8" | 3/4"           | 390            | 1/4"          | 356            | 3/4"              | 842            | 15°     | 94              | 7/8"                    | 4      |


**NSF 372 - LEAD FREE**

The wetted surface of this product contacted by consumable water contains less than one quarter of one percent (0.25%) of lead by weight. Material complies with state codes and standards, where applicable, requiring reduced lead content.

CUSTOMER: \_\_\_\_\_

PROJECT: \_\_\_\_\_

ENGINEER: \_\_\_\_\_

|   |                                 |
|---|---------------------------------|
| REV.  | DATE                            |
|                     |                                 |
| 2323 W. HUBBARD ST.<br>CHICAGO, IL 60612<br>TEL: 312-738-3800<br>FAX: 312-738-0415<br>WWW.METRAFLEX.COM |                                 |
| <b>CABLESPHERE MODEL MSRCNN</b><br>NEOPRENE EXPANSION JOINT, TAPPED BOLT HOLES                          |                                 |
| DRAWN BY: <b>DKISH</b>  | DATE: <b>1/19/2017</b>          |
| APPROVED: <b>JC</b>   | DATE: <b>1/23/2017</b>          |
| SCALE: <b>N/A</b>   | DRAWING NUMBER: <b>MSRCNN-1</b> |