

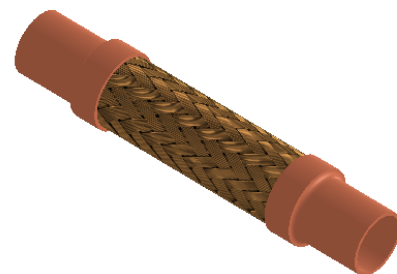
Note: Do not use wrenches on hose or braided collar.
 The I.D. of copper tube ends meets ASA Standard B16.18-1950 and ASA B16.22-1951.

Qty	Part Number	Nom. Size (in)	A ± 1/4 (in)	B ± 1/8 (in)	C Max. (in)	Max. Pressure @ 70°F (PSI)*	Approx. Weight (Lbs)	Project Info
	BBSC0050	1/2	10	7/8	1.031	450	1	
	BBSC0075	3/4	10	1-1/4	1.406	340	1	
	BBSC0100	1	10	1-1/2	1.781	302	1	
	BBSC0125	1-1/4	10	1-5/8	2.109	280	2	
	BBSC0150	1-1/2	12	2	2.438	245	3	
	BBSC0200	2	14	2-1/2	3.078	190	4	
	BBSC0250	2-1/2	16	2-29/32	3.969	150	3	
	BBSC0300	3	16	3-13/32	4.422	150	3	

* Sizes from 2 1/2" employ stainless steel braided hose to assure high pressures.
 MAX INTERMITTENT OFFSET FROM CENTERLINE 1/4"
 MAX PERMANENT OFFSET FROM CENTERLINE 1/2"

*For safe working pressure above 70°F, multiply the pressure shown at 70°F times the correction factor of the required temperature.

Temperature (°F)	Factor
70	1.0
150	.92
200	.89
250	.86
300	.83
350	.81




LEAD FREE

The wetted surface of this product contacted by consumable water contains less than one quarter of one percent (0.25%) of lead by weight. Material complies with state codes and standards, where applicable, requiring reduced lead content.

CUSTOMER: _____

PROJECT: _____

ENGINEER: _____

REV.	DATE
	
2323 W. HUBBARD ST. CHICAGO, IL 60612 TEL: 312-738-3800 FAX: 312-738-0415 WWW.METRAFLEX.COM	
<h2>MODEL BBS</h2> <h3>BRONZE CONNECTOR, SWEAT ENDS</h3>	
DRAWN BY: DKISH	DATE: 1/10/2014
APPROVED: JC	DATE: 1/10/2014
SCALE: NONE	DRAWING NUMBER: BBS