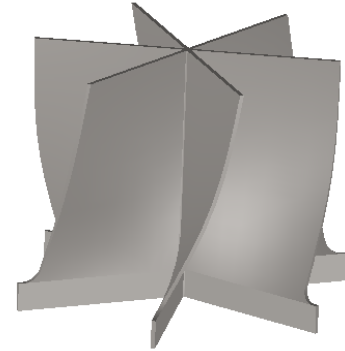
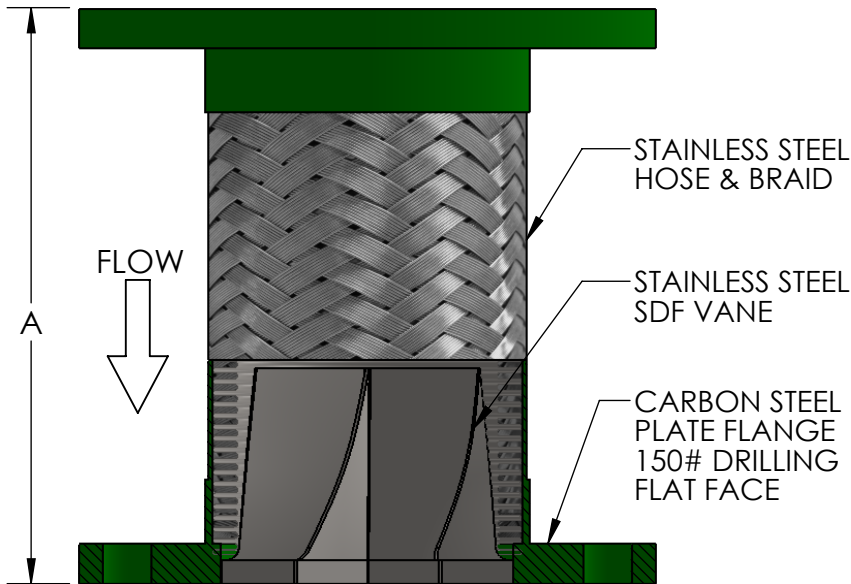
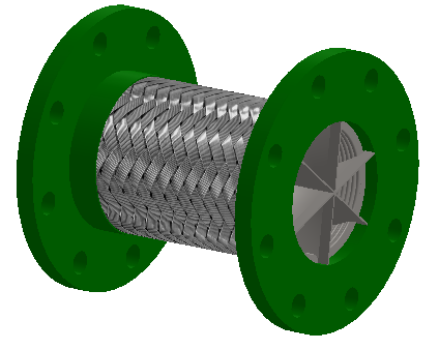


LONG RADIUS
DESIGNED TO BE INSTALLED
IMMEDIATELY UP-STREAM OF A
LONG RADIUS 90° ELBOW.



Qty	Part Number	Size (in)	A (in)	PSI @ 70°F	Project Info
	SDFL0200	2	9	455	
	SDFL0250	2-1/2	9	345	
	SDFL0300	3	9	289	
	SDFL0400	4	9	300	
	SDFL0500	5	11	220	
	SDFL0600	6	11	200	
	SDFL0800	8	12	190	
	SDFL1000	10	13	150	
	SDFL1200	12	14	125	
	SDFL1400	14	14	105	

*For safe working pressure above 70°F,
multiply pressure shown at 70°F by
correction factor of required temp.

Temperature (°F)	Factor
70	1.00
200	0.92
300	0.86
400	0.82
500	0.77
600	0.73

MAX PERMANENT OFFSET FROM CENTERLINE - 3/8"
MAX INTERMITTENT OFFSET FROM CENTERLINE - 1/8"

LEAD FREE

The wetted surface of this product contacted by consumable water contains less than one quarter of one percent (0.25%) of lead by weight. Material complies with state codes and standards, where applicable, requiring reduced lead content.

CUSTOMER: _____

PROJECT: _____

ENGINEER: _____

REV. 1	VANE STAINLESS	DATE 12/3/2013
		2323 W. HUBBARD ST. CHICAGO, IL 60612 TEL: 312-738-3800 FAX: 312-738-0415 WWW.METRAFLEX.COM
Suction Diffuser Flex with 150# Plate Flanges for Connecting to L.R. Elbow		
DRAWN BY: DKISH		DATE: 11/22/2013
APPROVED: JC		DATE: 11/22/2013
SCALE: NONE	DRAWING NUMBER: SDFL	