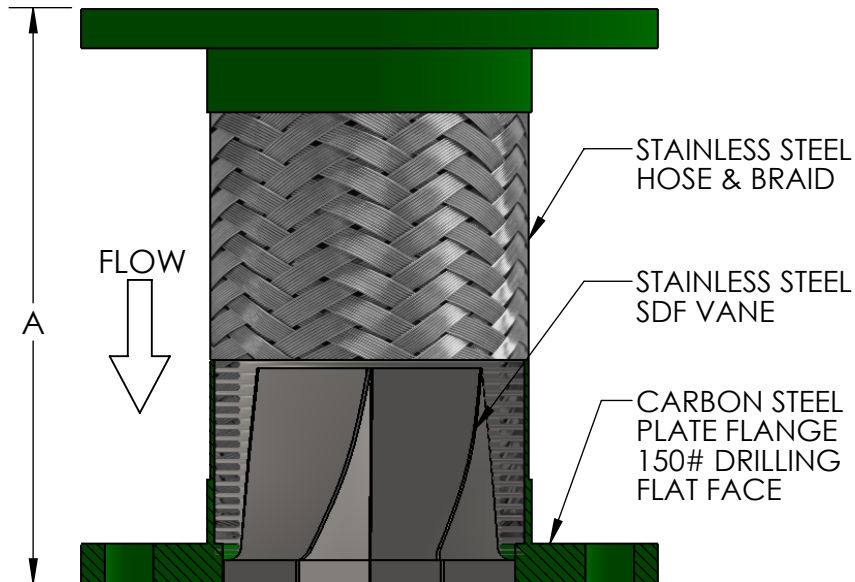
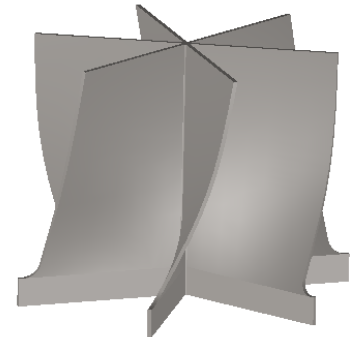
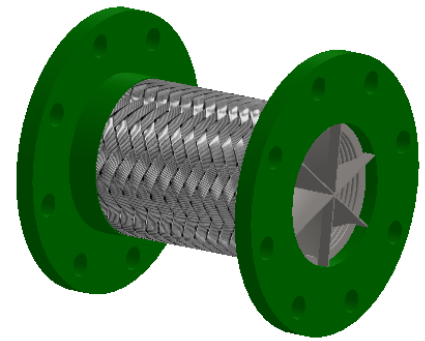


SHORT RADIUS
DESIGNED TO BE INSTALLED
IMMEDIATELY UP-STREAM OF A
SHORT RADIUS 90° ELBOW.



Qty	Part Number	Size (in)	A (in)	PSI @ 70°F	Project Info
	SDFS0200	2	9	455	
	SDFS0250	2-1/2	9	345	
	SDFS0300	3	9	289	
	SDFS0400	4	9	300	
	SDFS0500	5	11	220	
	SDFS0600	6	11	200	
	SDFS0800	8	12	190	
	SDFS1000	10	13	150	
	SDFS1200	12	14	125	
	SDFS1400	14	14	105	

MAX PERMANENT OFFSET FROM CENTERLINE - 3/8"
MAX INTERMITTENT OFFSET FROM CENTERLINE - 1/8"

*For safe working pressure above 70°F,
multiply pressure shown at 70°F by
correction factor of required temp.

Temperature (°F)	Factor
70	1.00
200	0.92
300	0.86
400	0.82
500	0.77
600	0.73

LEAD FREE

The wetted surface of this product contacted by consumable water contains less than one quarter of one percent (0.25%) of lead by weight. Material complies with state codes and standards, where applicable, requiring reduced lead content.

CUSTOMER: _____

PROJECT: _____

ENGINEER: _____

REV. 1	VANE STAINLESS	DATE 12/3/2013
Metraflex <i>for pipes in motion</i>		
2323 W. HUBBARD ST. CHICAGO, IL 60612 TEL: 312-738-3800 FAX: 312-738-0415 WWW.METRAFLEX.COM		
Suction Diffuser Flex with 150# Plate Flanges for Connecting to S.R. Elbow		
DRAWN BY: DKISH	DATE: 11/22/2013	
APPROVED: JC	DATE: 11/22/2013	
SCALE: NONE	DRAWING NUMBER: SDFS	