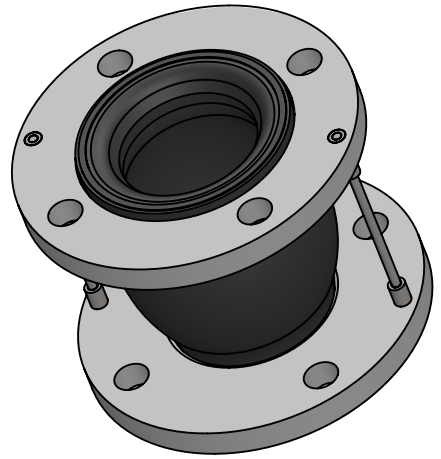


***Max Operating Conditions**

Temp. (°F)	Pressure (PSI)
170°	225
180°	200
190°	175
200°	150
210°	125
220°	100
230°	75

MAXIMUM WORKING TEMPERATURE 230°F



LEAD FREE

The wetted surface of this product contacted by consumable water contains less than one quarter of one percent (0.25%) of lead by weight. Material complies with state codes and standards, where applicable, requiring reduced lead content.

ITEM	PART NAME	MATERIAL
1	COVER	EPDM
2	TUBE	EPDM
3	ANCHOR WIRE	GALV. STEEL
4	FLANGE	GALV. STEEL, 150#, DRILLED
5	CABLE	GALV. STEEL AIRCRAFT CABLE

Notes:

For installation instructions go to www.metroflex.com. Joint must be installed at its neutral length, and the bolts properly torqued. Not suitable for steam or vacuum applications. Contact factory for other sizes.

*EPDM is the standard elastomer for the interior and exterior covering. Contact factory for other elastomers.

MOVEMENT CAPABILITY AND FORCES

Qty	Part Number	Size I.D. (in)	F/F (in)	MOVEMENT CAPABILITY AND FORCES							Weight (Lbs)	No. Cables	Hole Size
				Comp. (in)	Approx Force (Lbs)	Elong. (in)	Approx Force (Lbs)	Lateral (in)	Approx Force (Lbs)	Angular (Deg)			
	MSRCDEE0200	2	6	0.5	55	0.125	73	0.5	55	15	8	2	0.75
	MSRCDEE0250	2.5	6	0.5	102	0.125	68	0.5	97	15	13	2	0.75
	MSRCDEE0300	3	6	0.5	136	0.125	115	0.5	108	15	14	2	0.75
	MSRCDEE0400	4	6	0.625	145	0.125	242	0.5	275	15	18	2	0.75
	MSRCDEE0500	5	6	0.625	172	0.125	196	0.5	308	15	23	2	0.875
	MSRCDEE0600	6	6	0.625	293	0.125	563	0.5	484	15	28	4	0.875
	MSRCDEE0800	8	6	0.625	372	0.125	587	0.5	688	15	40	4	0.875
	MSRCDEE1000	10	8	0.75	398	0.25	455	0.75	781	15	68	4	1
	MSRCDEE1200	12	8	0.75	390	0.25	356	0.75	842	15	96	4	1

PROJECT INFO

CUSTOMER: _____

PROJECT: _____

ENGINEER: _____

REV.	DATE
2323 W. HUBBARD ST. CHICAGO, IL 60612 TEL: 312-738-3800 FAX: 312-738-0415 WWW.METRAFLEX.COM	
<h2>CABLESPHERE</h2> <h3>EPDM DRILLED SPHERICAL CONNECTOR</h3>	
DRAWN BY: DKISH	DATE: 11/5/2014
APPROVED: JC	DATE: 11/5/2014
SCALE: NONE	DRAWING NUMBER: MSRC-EE-D